



Department of Public Works
City Engineering Division

Robert F. Phillips, P.E.
City Engineer

City-County Building, Room 115
210 Martin Luther King, Jr. Boulevard
Madison, Wisconsin 53703
FAX 608 264 9275
Textnet 866 704 2315
www.cityofmadison.com

608 266 4751

Assistant City Engineer
Michael R. Dalley, P.E.

Principal Engineers
Christina M. Bachmann, P.E.
John S. Fahrney, P.E.
Gregory T. Fries, P.E.
Christopher J. Petykowski, P.E.

Facilities & Sustainability
Jeanne E. Hoffman, Manager
James C. Whitney, A.I.A.

Operations Supervisor
Kathleen M. Cryan

GIS Manager
David A. Davis, R.L.S.

Financial Officer
Steven B. Danner-Rivers

Hydrogeologist
Brynn Bemis

May 23, 2012

ADDENDUM NO. 1

CONKLIN PLACE SANITARY SEWER AND WATER MAIN REPLACEMENT - 2012

CONTRACT NO. 6903

Revise and amend the contract document(s) and plans for the above project as stated in this addendum, otherwise the original documents shall remain in effect.

Revise and amend the contract document(s) and plans for the above project as stated in this addendum, otherwise the original documents shall remain in effect.

PLANS:

REMOVE SHEETS W-1, W-2 AND W-4

INSERT SHEETS W-1, W-2 AND W-4 (REVISED 2/4/11)

Summary of plan revisions as follows:

Sheet W-1: Vertical offset removed and Proposed W.M. lowered and deflected to avoid Existing W.M. Approximate location of Existing W.M. added to profile.

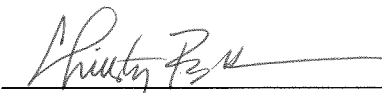
Sheet W-2: Placement of Temporary Hydrant changed by the inclusion of Tee or 90° Bend. Proposed W.M. lowered and deflected to avoid Existing W.M. Approximate location of Existing W.M. added to profile.

Sheet W-4: Construction phasing lines added.

The electronic files on the website have also been updated; please replace any plans or contract documents that were saved or printed off of the web.

Please acknowledge this addendum on Page E-1.

RFP:jmw


Robert F. Phillips, P.E.
City Engineer

REVISION 5/22/2012

DISCLAIMER NOTE:
 UTILITY LOCATIONS SHOWN ARE APPROXIMATE ONLY. IT SHALL BE THE CONTRACTOR'S RESPONSIBILITY TO DETERMINE THE EXACT HORIZONTAL AND VERTICAL LOCATION OF ALL EXISTING UNDERGROUND AND OVERHEAD UTILITIES PRIOR TO COMMENCING WORK.



TO OBTAIN LOCATION OF PARTICIPANTS' UNDERGROUND FACILITIES BEFORE YOU DIG IN WISCONSIN

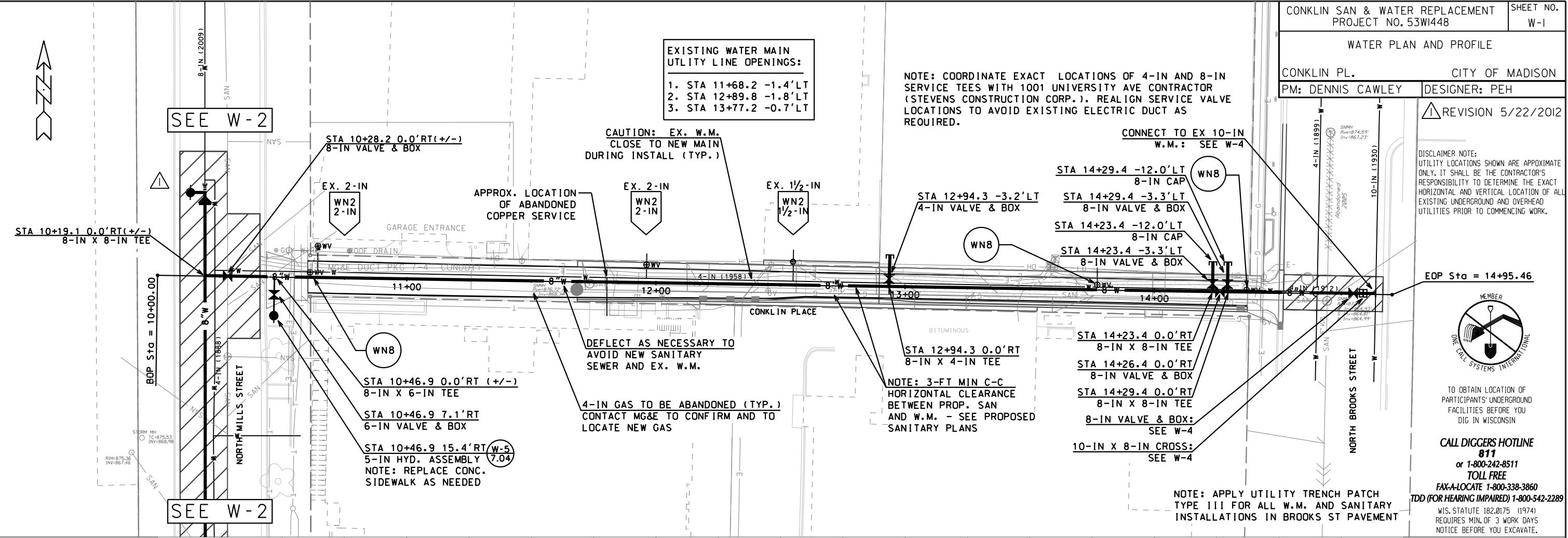
CALL DIGGERS HOTLINE 811
 or 1-800-242-8511
 TOLL FREE
 FAX-A-LOCATE 1-800-338-3860
 TDD (FOR HEARING IMPAIRED) 1-800-542-2289
 WIS. STATUTE 182.0175 (1974)
 REQUIRES MIN. OF 3 WORK DAYS NOTICE BEFORE YOU EXCAVATE.

EXISTING WATER MAIN UTILITY LINE OPENINGS:
 1. STA 11+68.2 -1.4'LT
 2. STA 12+89.8 -1.8'LT
 3. STA 13+77.2 -0.7'LT

NOTE: COORDINATE EXACT LOCATIONS OF 4-IN AND 8-IN SERVICE TEES WITH 1001 UNIVERSITY AVE CONTRACTOR (STEVENS CONSTRUCTION CORP.). REALIGN SERVICE VALVE LOCATIONS TO AVOID EXISTING ELECTRIC DUCT AS REQUIRED.

CAUTION: EX. W.M. CLOSE TO NEW MAIN DURING INSTALL (TYP.)

CONNECT TO EX 10-IN W.M.: SEE W-4

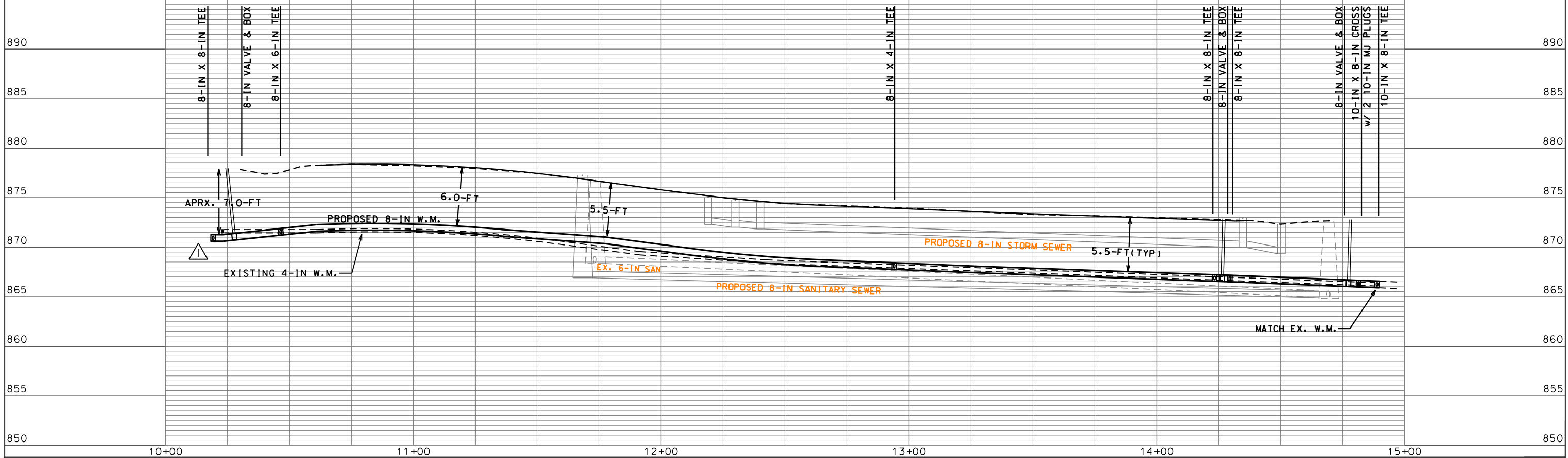


DEFLECT AS NECESSARY TO AVOID NEW SANITARY SEWER AND EX. W.M.

NOTE: 3-FT MIN C-C HORIZONTAL CLEARANCE BETWEEN PROP. SAN AND W.M. - SEE PROPOSED SANITARY PLANS

4-IN GAS TO BE ABANDONED (TYP.) CONTACT MG&E TO CONFIRM AND TO LOCATE NEW GAS

NOTE: APPLY UTILITY TRENCH PATCH TYPE III FOR ALL W.M. AND SANITARY INSTALLATIONS IN BROOKS ST PAVEMENT



PLOT SCALE:
 PLOT NAME:
 REV. DATE:
 ORIGINATOR: CITY OF MADISON, STREETS DIVISION

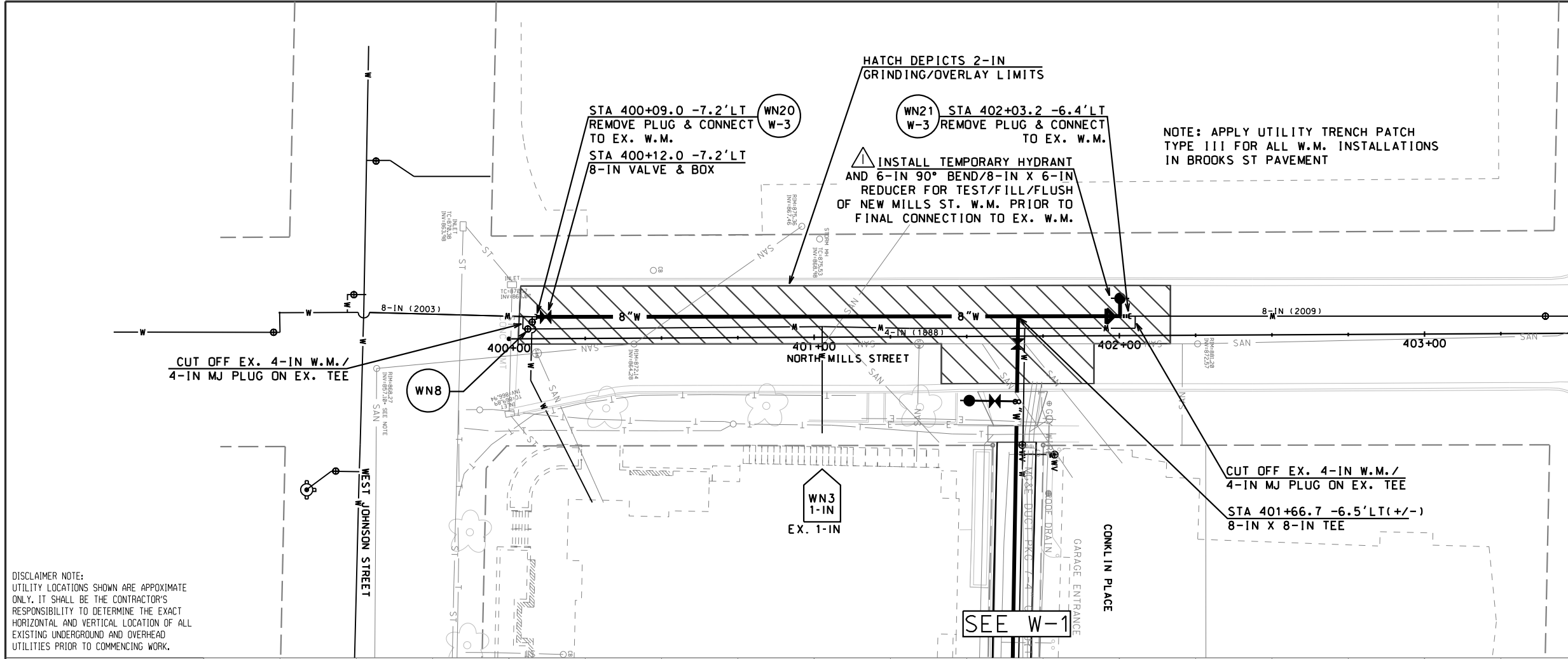
REVISION 5/22/2012



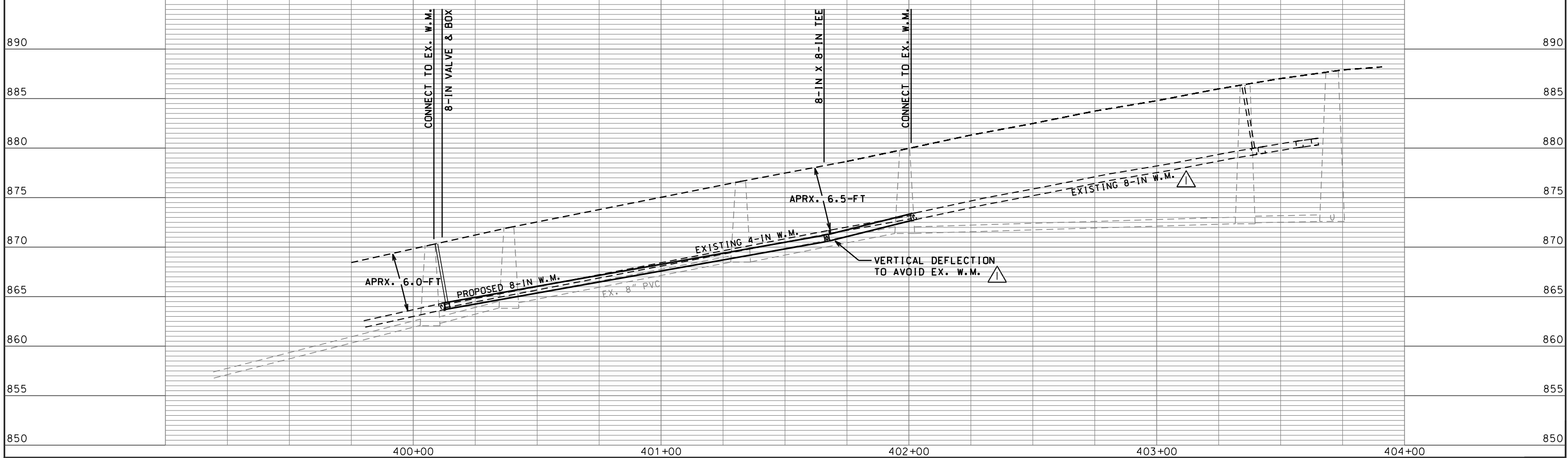
TO OBTAIN LOCATION OF PARTICIPANTS' UNDERGROUND FACILITIES BEFORE YOU DIG IN WISCONSIN

CALL DIGGERS HOTLINE 811
or 1-800-242-8511
TOLL FREE
FAX-A-LOCATE 1-800-338-3860
TDD (FOR HEARING IMPAIRED) 1-800-542-2289

WIS. STATUTE 182.0175 (1974)
REQUIRES MIN. OF 3 WORK DAYS NOTICE BEFORE YOU EXCAVATE.



DISCLAIMER NOTE:
UTILITY LOCATIONS SHOWN ARE APPROXIMATE ONLY. IT SHALL BE THE CONTRACTOR'S RESPONSIBILITY TO DETERMINE THE EXACT HORIZONTAL AND VERTICAL LOCATION OF ALL EXISTING UNDERGROUND AND OVERHEAD UTILITIES PRIOR TO COMMENCING WORK.



PLOT SCALE:
 PLOT NAME:
 REV. DATE:
 ORIGINATOR: CITY OF MADISON, STREETS DIVISION

